

St Marys Cement Community Relations Committee

Meeting Minutes

Tuesday December 5, 2017

6:00 p.m. – St Marys Cement, Bowmanville Plant

Attendees: Amy Burke, *Senior Planner, Municipality of Clarington*
Jeff Mitchell, *Port Darlington Community Association*
Chris Richards, *Environmental Manager, St Marys Cement*
David Veenstra, *Port Darlington Community Association*
Ernie Hamilton, *Quarry Manager, St Marys Cement*
Jim Grimley, *Wilmot Creek Homeowners Association*
Jim Storey, *Operations Manager, St Marys Cement*
Ruben Plaza, *Environmental Manager, St Marys Cement*
Tanya Pardy, *Human Resources Manager, St Marys Cement*
Willie Woo, *Municipality of Clarington Council*

Guests: Saad Sarfraz, *Summer Student, St Marys Cement*

Regrets: , *Cherisse Diaram, Quarry EIT, St Marys Cement*

1. Agenda adopted

- Adopt October 2017 minutes

2. Adoption of Minutes

- moved by Amy Burke
- seconded by Willie Woo

3. Review of Community Concerns

- a) There were 2 community concerns received in December

4. Environmental Results

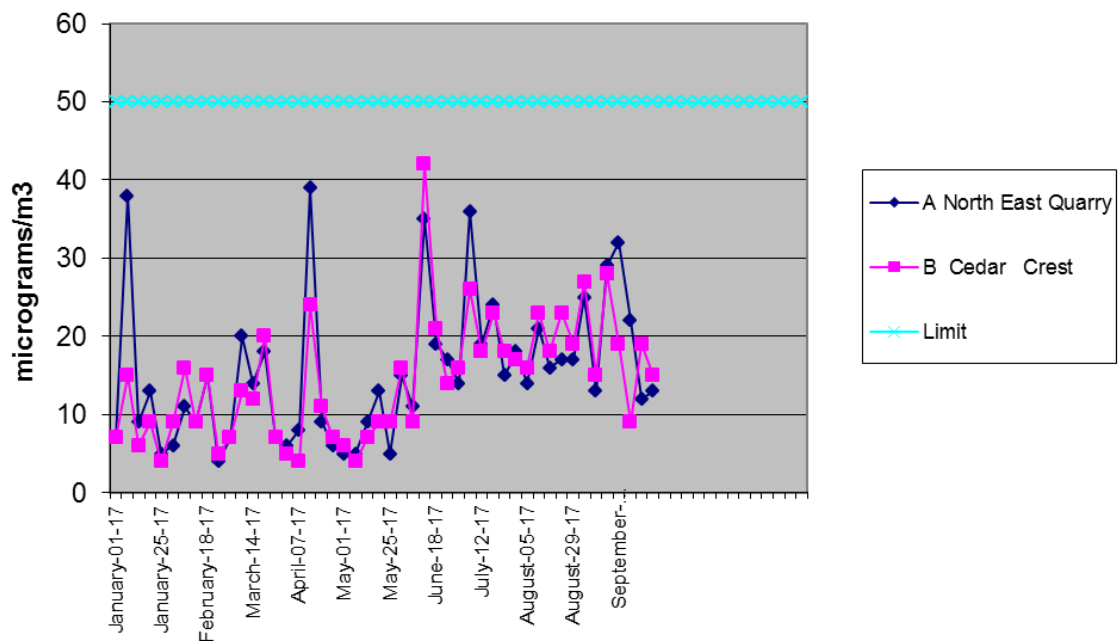
- Review of monitor location and names being conducted
- The PM10 monitoring station and dust fall sampler locations were reviewed and are as follows:



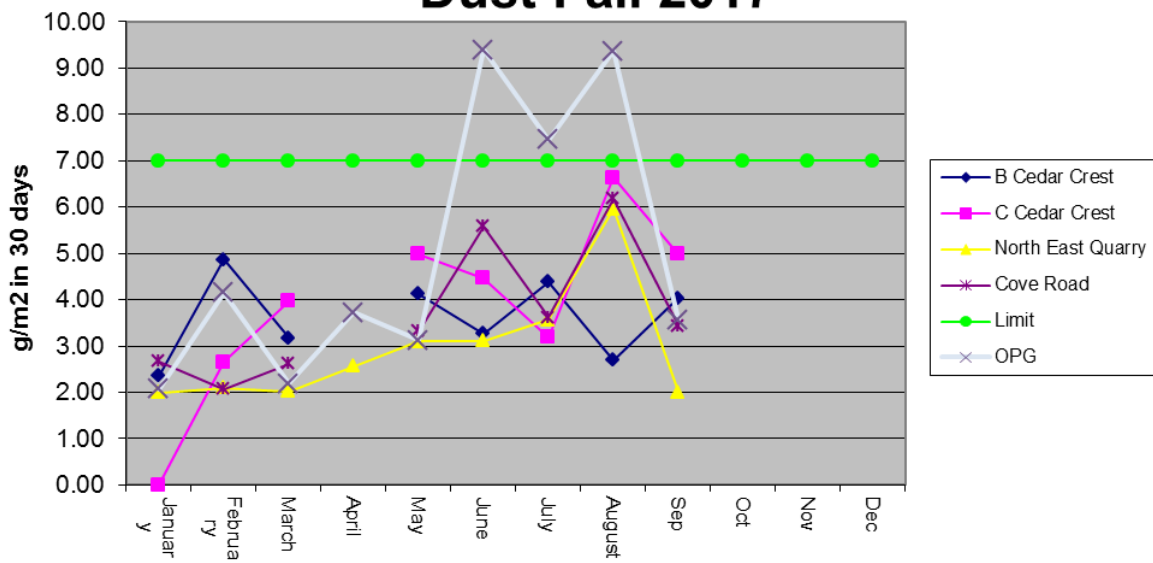
| Sample Station | Location | Monitor |
|-------------------|------------------------------|---------------------------|
| OPG | OPG | PM 10 BAM ,Dust fall Jar |
| Cove Road | Cove Road | PM 10 BAM , Dust Fall Jar |
| North East Quarry | Hutton Transport | PM 10 Hi Vol, Dust Fall |
| Aggregate | Aggregate | Seismograph |
| Baseline | Baseline | Seismograph |
| Cedar Crest | Cedar Crest | PM 10 Hi Vol Dust Fall |
| C | Cedar Crest (MOECC location) | Dust Fall Jar |

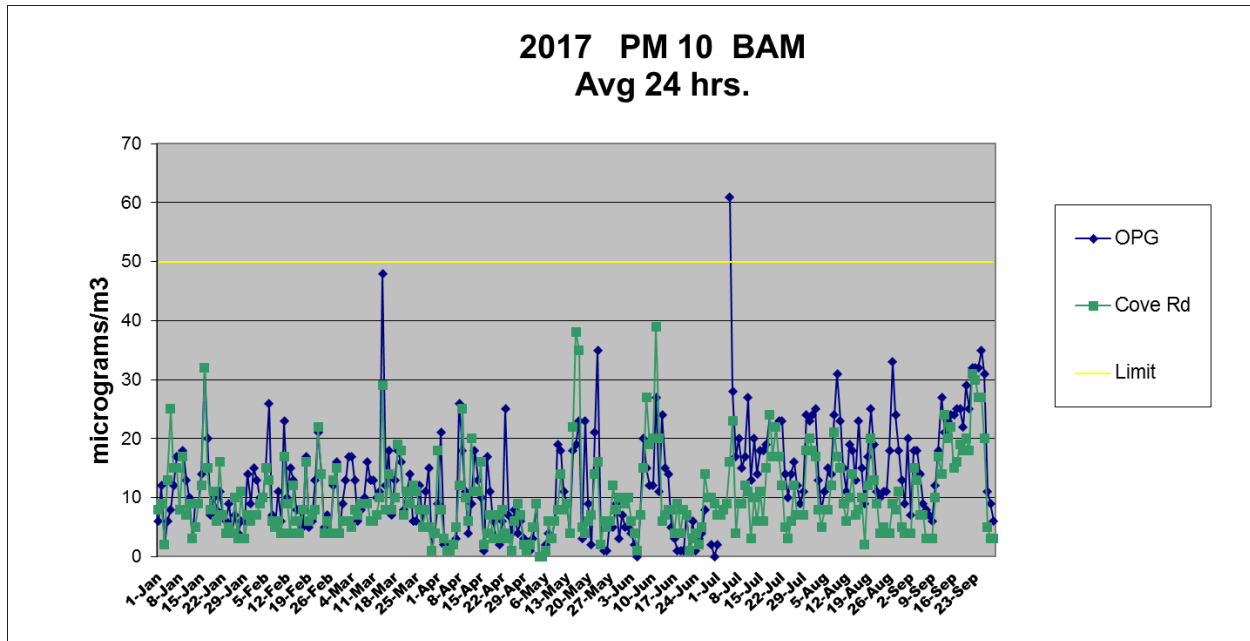
- Dust fall jars take a sample during 30 days, PM 10 BAM monitors take an hour sample and PM 10 hi-vol monitors take a sample for 24H periods every 6 days

PM 10 Program 2017



Dust Fall 2017

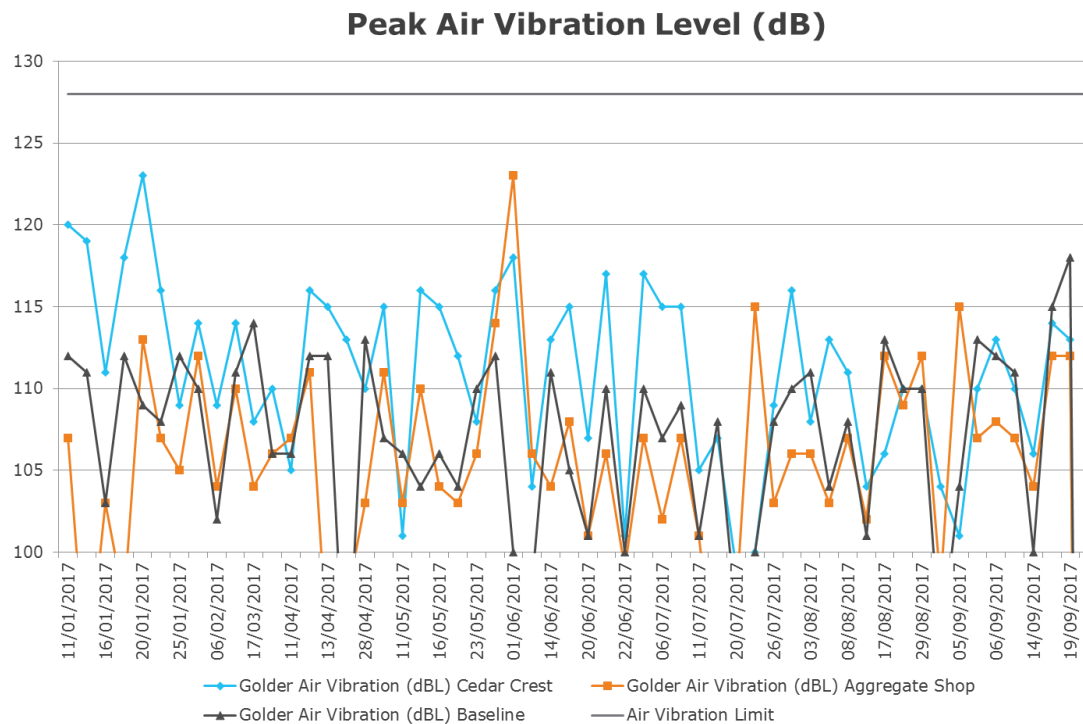
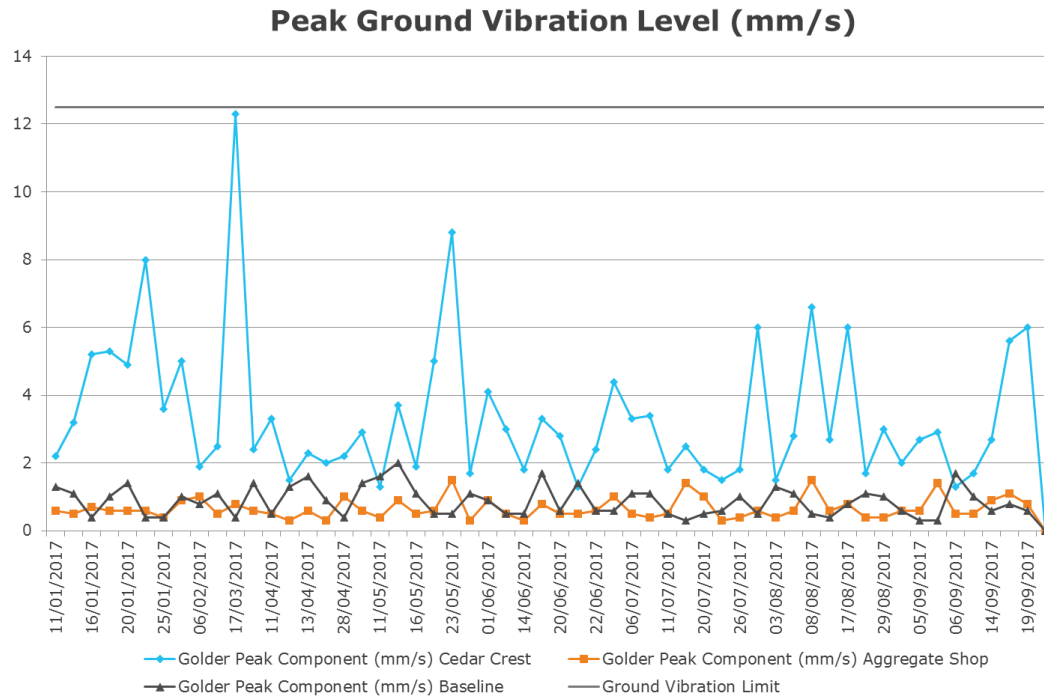




- SO₂ and NO_x Emissions
 - SO₂ emissions for 2017 to September 30th are 2,624 tonnes; the total allowance for 2017 is 3684 tonnes.
 - NO_x emissions for 2017 to September 30th are 2,249 tonnes; the total allowance for 2017 is 3,349 tonnes.
 - Emissions related to input chemical content (higher sulphur content in limestone feed results in higher sulphur emissions)
 1. Ammonia injection is used to control NO_x
 2. Hydrated lime and lime hydrator control SO₂

5. Quarry Operation

- Producing 2, 3 and 5
- No ground or air vibration exceedances to date in 2017
- Overburden stripping, screening and stockpiling
- Berm construction to continue along east side of property, wrapping up for 2017 in next week or so
- Clay hauled as part of Port Hope Area Initiative, no more in 2017



6. Community Outreach

- 4th Quarter
- Bowmanville Hospital

- Big Brothers & Big Sisters of Clarington
- Clarington Sports Hall of Fame
- Santa Claus Parades (Courtice, Bowmanville, Newcastle)
- Books for Breakfast with Santa (YMCA program for children)
- Community Care Durham (Luncheon Out program in Bowmanville)
- Turkeys for Hampers and Christmas dinner – St. John's, St. Joseph's, St. Vincent de Paul, Bethesda House, Salvation Army, Denise House

7. Terms of Reference

- Following annual CRC update presentation to Council, Council resolution passed requesting that the CRC review and update the Committee Terms of Reference. The current, original Terms of Reference are from 1998.
- Updates proposed by Municipality and SMC distributed by email earlier in the day, hard copies with tracked changes distributed during meeting
- Change recommendations requested and will discuss at next meeting

8. Overflow channel

- Runs adjacent to property along former Waverly Road, part of which is within West Side Marsh and part of which is within St Marys Cement property
- Channel has built up again
 - Clearing of this channel was performed several times during Spring/Summer with permission from CLOCA
 - Build-up of sand bar is natural process due to currents and occurs within hours of opening it
 - On some of those occasions, water flowed from the lake into the channel, rather than from the marsh through the channel
 - Work at this channel cannot be carried out unless permitted by CLOCA
- Meeting scheduled on October 26th between Clarington, CLOCA and St Marys
 - Ruben will take request for updates to community to meeting and Amy will inform the municipality representatives of the same

9. Projects Update

- Low Carbon Alternative fuels – chipped demolition waste wood use to start in November (at 8% replacement)
- Low Carbon Alternative fuels – plastics trial to be done later

10. CBM Underground Aggregate Mine Update

- no new updates
- Will request that the schedule be updated to reflect current situation/delays and upcoming meetings and be posted on the project website

11. 2018 CRC Meetings

- Amy will send out potential dates to group after reviewing schedule to members.